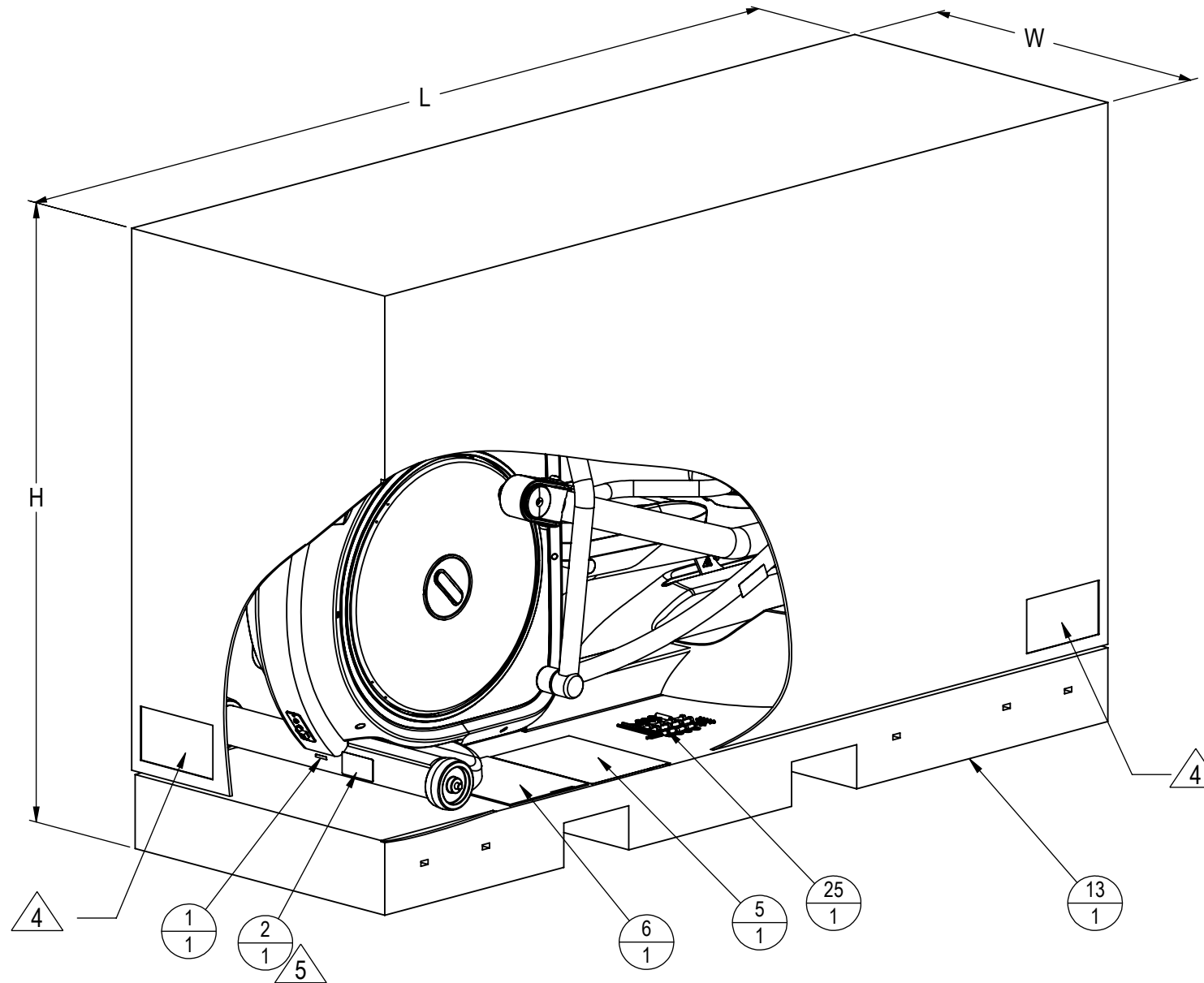


- NOTES:
- BOX SIZE
 - L = 200cm
 - H = 126cm
 - W = 70cm
 - BOX UNIT GROSS WEIGHT: 437 lbs / 199 kg
 - E-TBT NET WEIGHT: 365 lbs / 165.6 kg
 - LABEL INFORMATION (4 PLACES)
 - MODEL: E-TBT
 - SKU: 9-6080-MUNBP0
 - SERIAL NUMBER: PER DOC 622-200-110
 - COUNTRY OF ORIGIN: MADE IN CHINA
 - PRIMARY SERIAL LABEL INFORMATION
 - SKU: 9-6080-MUNBP0
 - SERIAL NUMBER: PER DOC 622-200-110
 - MFG DATE: MM/YYYY
 - PHASE: N/A
 - CYCLES: N/A
 - WATTS: 66 W
 - VOLTS/AMPS: 12 VDC / 5.5 A
 - TYPE: N/A
 - CERTIFICATIONS: CSA / CE / FCC
 - SECONDARY SERIAL LABEL INFORMATION
 - SKU: 9-6080-MUNBP0
 - SERIAL NUMBER: PER DOC 622-200-110



REVISION HISTORY				
REV	DATE	DESCRIPTION	ECO	BY
004	8/17/2010	PROTOTYPE RELEASE	---	SCN
011	9/3/2010	ADD 050-2100	---	SCN
012	9/14/2010	ADD 140-0220 (1), 718-5067 (1), & NOTE 2	---	SCN
016	9/29/2010	ADD ADD'L SHT FOR PACKAGE; ADD 050-2070 (1), 050-2115-01 (1), 620-7135 (1), 620-8038 (1), 740-4598 (1); CHG 740-4588, 740-4589, 740-4591, 740-4593, 740-7825, 740-7922 TO REFERENCE; CHG QTY OF 740-7896 WAS 12 IS 4	---	SCN
017	10/25/2010	REPLACE 050-2070 (1) FOR 050-2198; ADD 050-2199 (1) ADD ADD'L NOTES 5 & 6; REMOVE 050-2100 (1)	---	SCN
018	11/10/2010	SHT 1: UPDATE NOTES 2, 5f, & 5g; SHT2: ADD TORQUE SPEC IN NOTES	---	SCN
A	4/5/2011	PRODUCTION RELEASE	13487	SCN

ITEM NO.	PART NUMBER	DESCRIPTION	QTY.	Note
1	050-2115-01	LABEL,MADE IN CHINA	1	
2	050-2198	LABEL, PRIMARY S/N, CARDIO	1	
3	050-2199	LABEL, SECONDARY S/N, CARDIO	1	
4	140-0220	TIE STRAP, 14"	1	
5	620-7135	DOC.,WARRANTY,COMMERCIAL	1	
6	620-8038	MANUAL, OPERATIONS, E-TBT	1	
7	718-5067	ASSY, BATTERY	1	
8	718-5202	ASSY, HARNESS, COMM, E-CT	1	
9	721-1176	ASSY, ADT LCB, UB/RB/EL	1	
10	740-4589	SCREW,M8X1.25, 20mm,HHC,SS	8	REF
11	740-4591	WASHER,EXTERNAL,LOCK,8 IDX 150D	8	REF
12	740-4593	SET SCREW, M8 X 1.25, 40MM, CP, HK	4	REF
13	740-4598	PACKAING, BOX, TBT/X	1	
14	740-7714	ASSY, FRAME, BASE, E-CT	1	
15	740-7825	WASHER, 8.4MM ID x 16MM OD x 1.6 THK	4	REF
16	740-7853	COVER, UPPER BODY JOINT, FRONT RIGHT, E-CT	1	
17	740-7854	COVER, UPPER BODY JOINT, BACK RIGHT, E-CT	1	
18	740-7855	COVER, UPPER BODY JOINT, FRONT, LEFT, E-CT	1	
19	740-7856	COVER, UPPER BODY JOINT, BACK LEFT, E-CT	1	
20	740-7866	ASSY, WELDMENT, DISPLAY, NECK, E-CT	1	
21	740-7896	SCREW, SELF TAPPING, M4.2 X 13, PH, SS	4	
22	740-7899	ASSY, EXT CONNECTIVITY, E-CT	1	
23	740-7919	ASSY, HANDLEBAR, LEFT, E-CT	1	
24	740-7920	ASSY, HANDLEBAR, RIGHT, E-CT	1	
25	740-7921	KIT, TOOL, INSTALL, E-TBT	1	
26	740-7922	SCREW, SELF TAPPING, M2.9 X 13, PH, SS	8	REF
27	740-4588	SCREW, M8 X 1.25, 16MM, BHC, HK, SS	4	

DOCUMENT STATUS:

CLASS OF WORK	UNLESS OTHERWISE SPECIFIED DIMS ARE IN mm. TOLERANCES FOR MEASURE OF LENGTH ARE:							ANGLES = ±2°
	0.5 to 3	>3 to 6	>6 to 30	>30 to 120	>120 to 400	>400 to 1000	>1000 to 2000	
FINE	±0.05	±0.05	±0.1	±0.15	±0.2	±0.3	±0.5	----
MEDIUM X	±0.1	±0.1	±0.2	±0.3	±0.5	±0.8	±1.2	±2
COARSE	±0.2	±0.3	±0.5	±0.8	±1.2	±2	±3	±4
VERY COARSE	----	±0.5	±1	±1.5	±2.5	±4	±6	±8

MATERIAL
SEE BOM

FINISH
N/A

VENDOR: N/A

P/N: N/A

THIRD ANGLE PROJECTION



DRAWN	INITIAL SCN	DATE 8/10/10
CHECKED		
APPROVED		

CORE INDUSTRIES, INC. DBA
STAR TRAC
14410 Myford Road
Irvine CA 92606

STARTRAC PART NO
9-6080-MUNBP0 REV **A**

TITLE
E-TBT6080, UNIV BASE

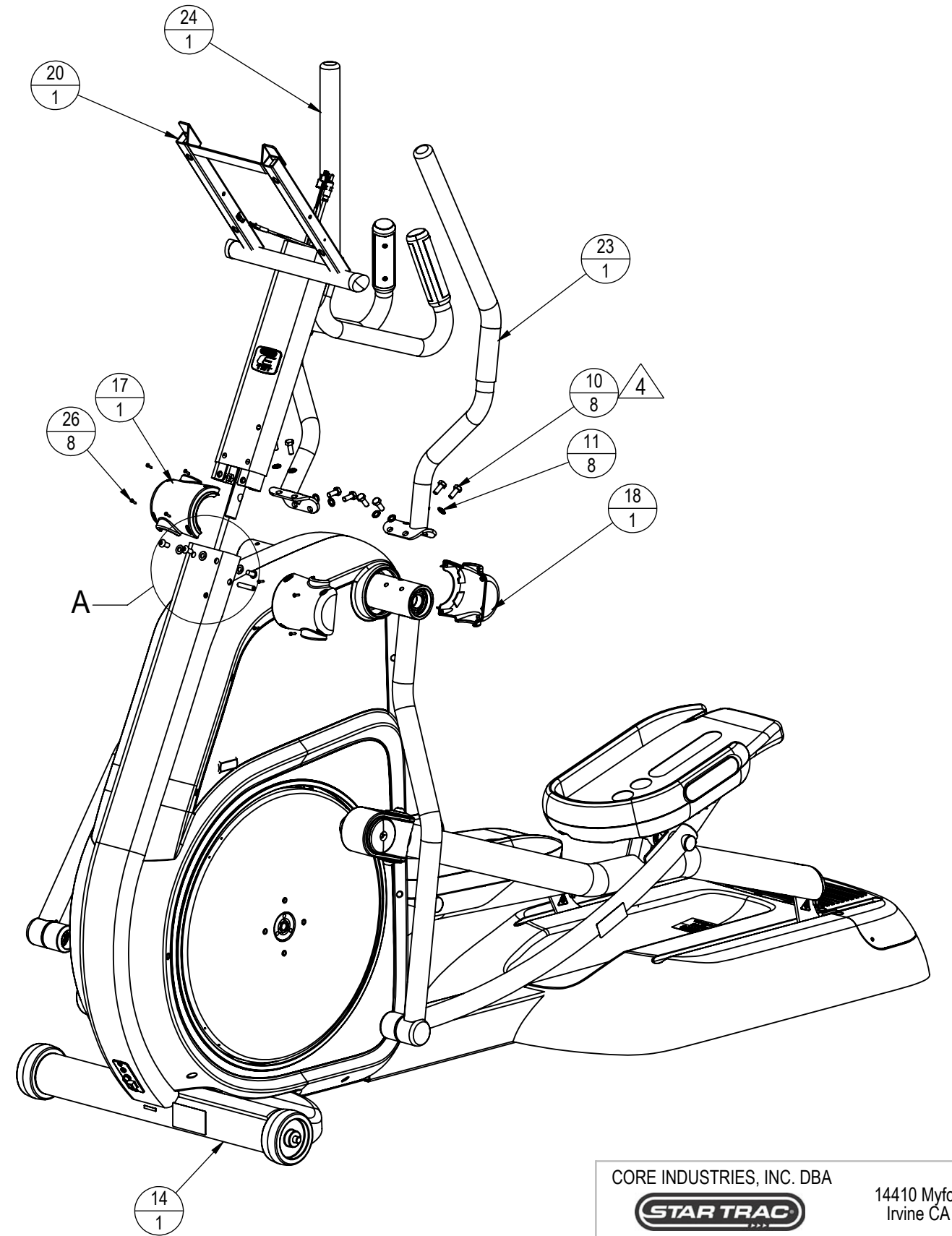
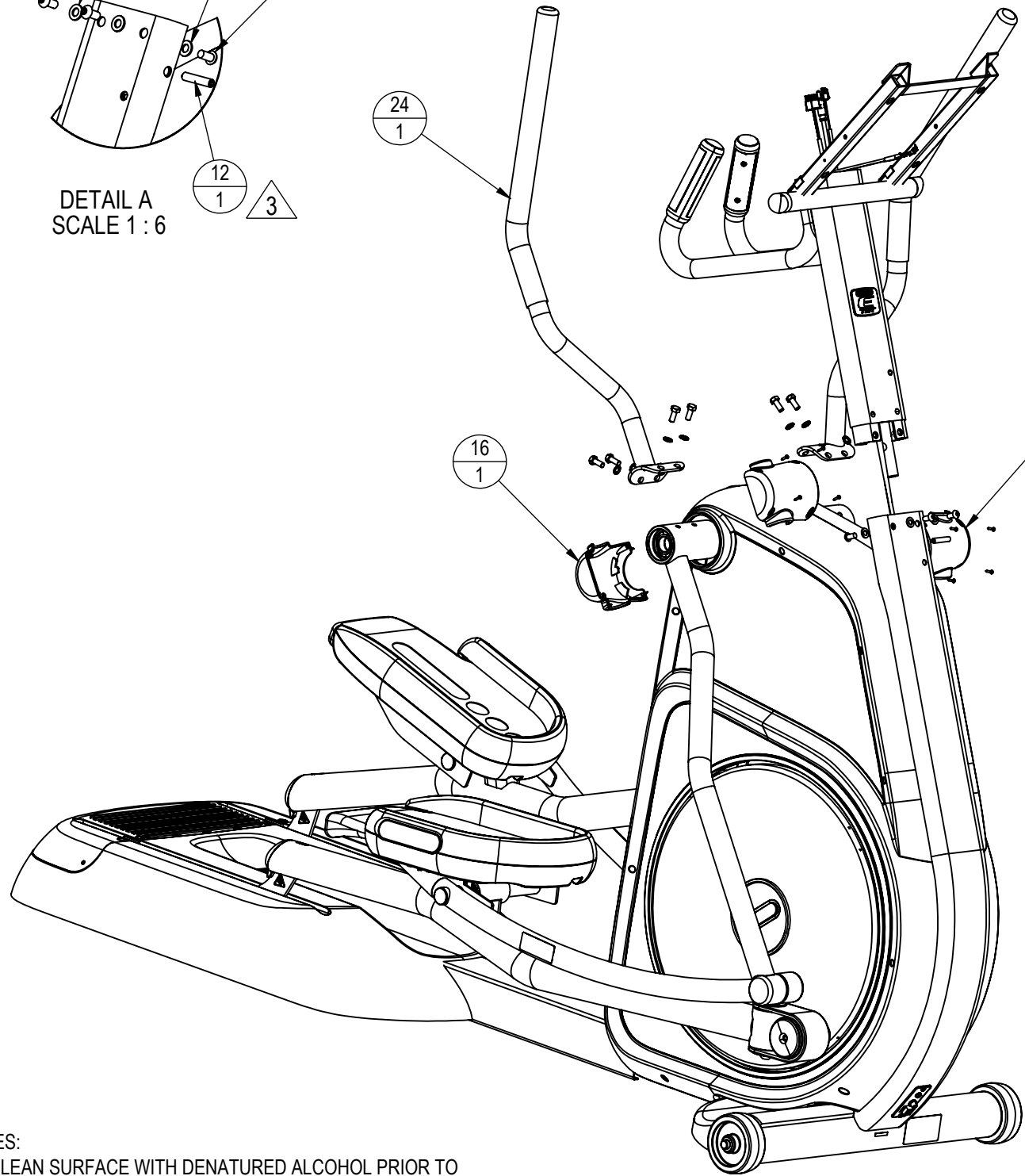
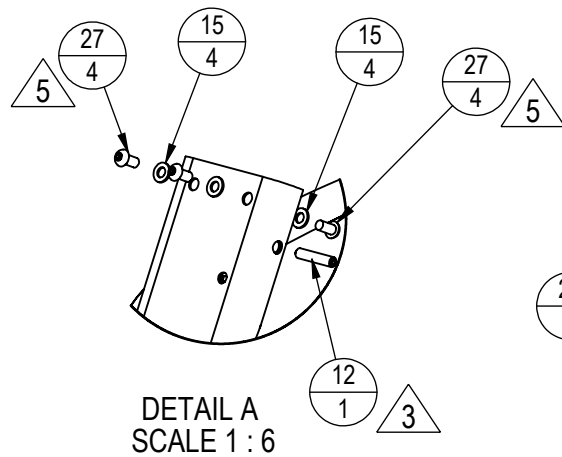
SCALE: 1:12 | SHEET 1 OF 3 | SHEET SIZE: B

NOTICE OF PROPRIETARY INFORMATION
THIS DOCUMENT SHALL NOT BE REPRODUCED NOR SHALL THE INFORMATION CONTAINED HEREIN BE USED BY OR DISCLOSED TO OTHER EXCEPT AS EXPRESSLY AUTHORIZED BY CORE INDUSTRIES, INC., D.B.A. STAR TRAC.

9 8 7 6 5 4 3 2 1

J
I
H
G
F
E
D
C
B
A

J
I
H
G
F
E
D
C
B
A



- NOTES:
1. CLEAN SURFACE WITH DENATURED ALCOHOL PRIOR TO ADHERING LABELS
 2. TRIM EXCESS TIE STRAP AS NEEDED
 3. TORQUE TO 10-12.5 lb-ft / 13.5-17 N-m
 4. TORQUE TO 19-21 lb-ft / 25.5-28.5 N-m
 5. TORQUE TO 8-10 lb-ft / 10-13.5 N-m

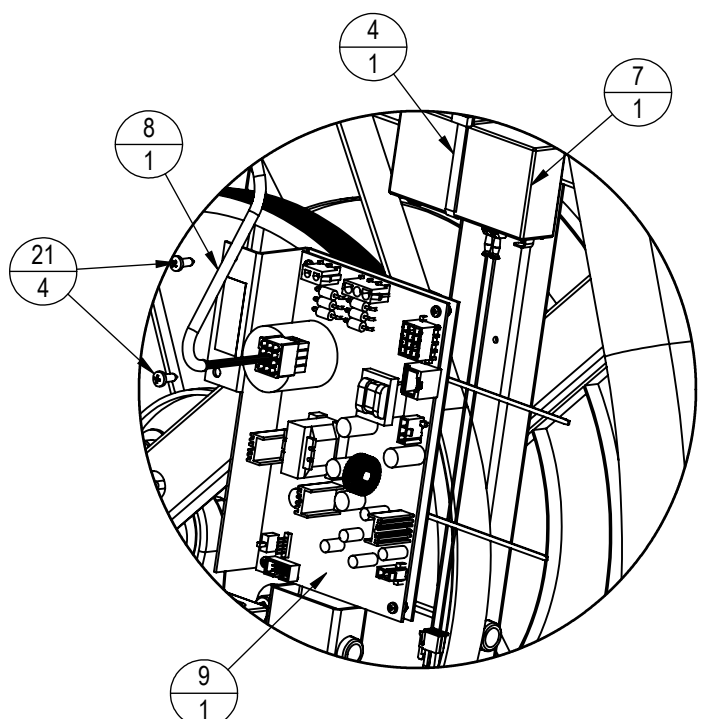
CORE INDUSTRIES, INC. DBA		14410 Myford Road Irvine CA 92606	
STAR TRAC			
STARTRAC PART NO	9-6080-MUNBP0		REV A
TITLE E-TBT6080, UNIV BASE			
SCALE: 1:10	SHEET 2 OF 3	SHEET SIZE: B	

9 8 7 6 5 4 3 2 1

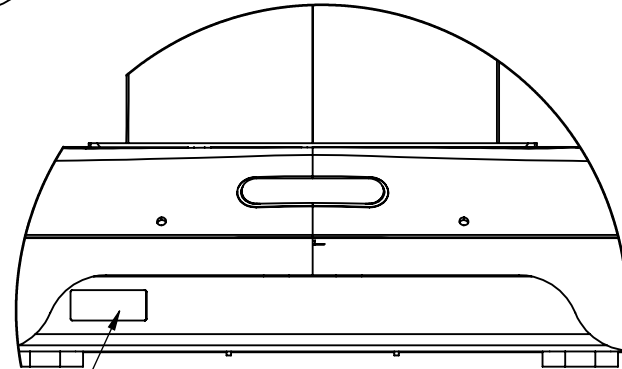
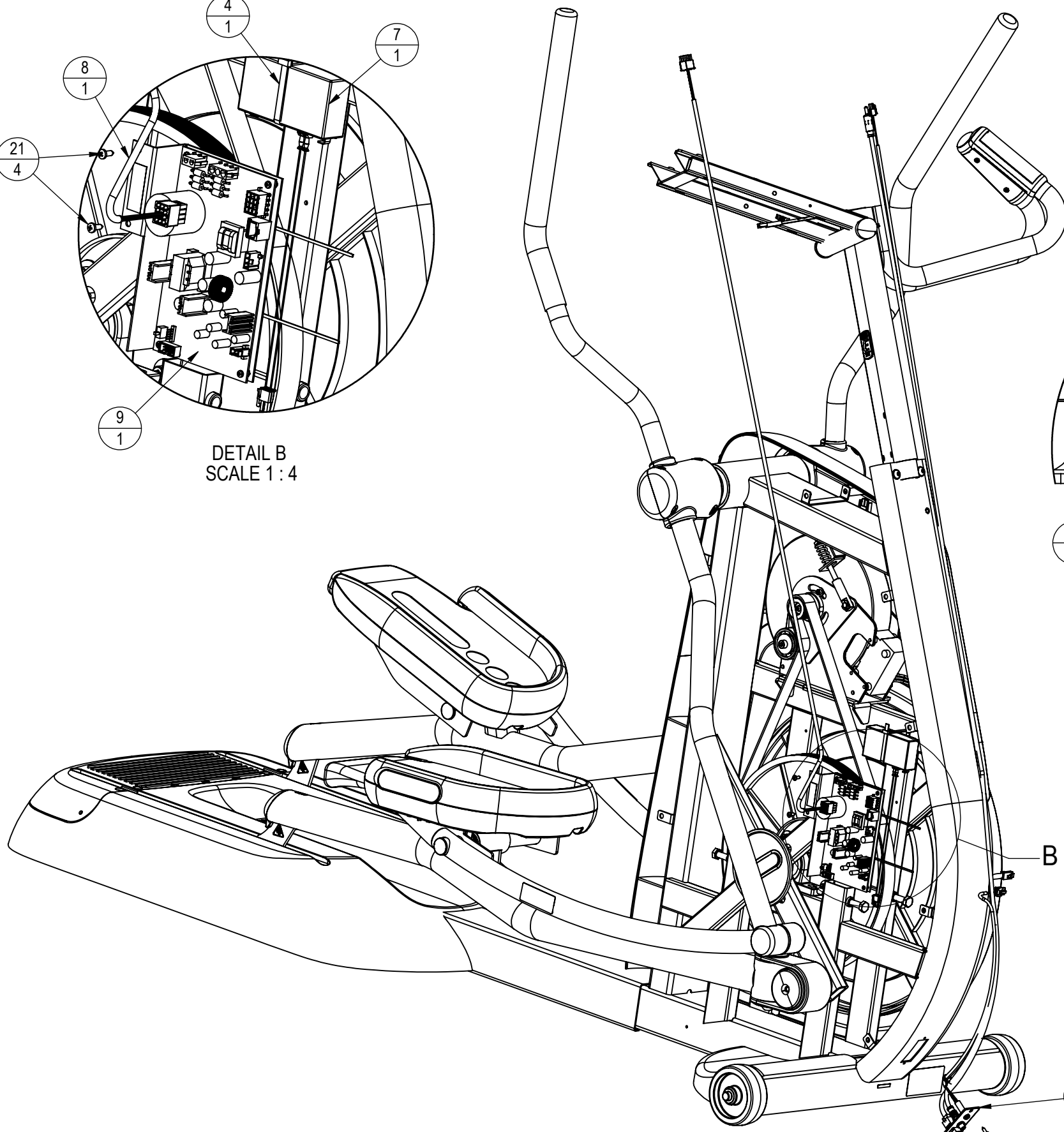
9 8 7 6 5 4 3 2 1

J
I
H
G
F
E
D
C
B
A

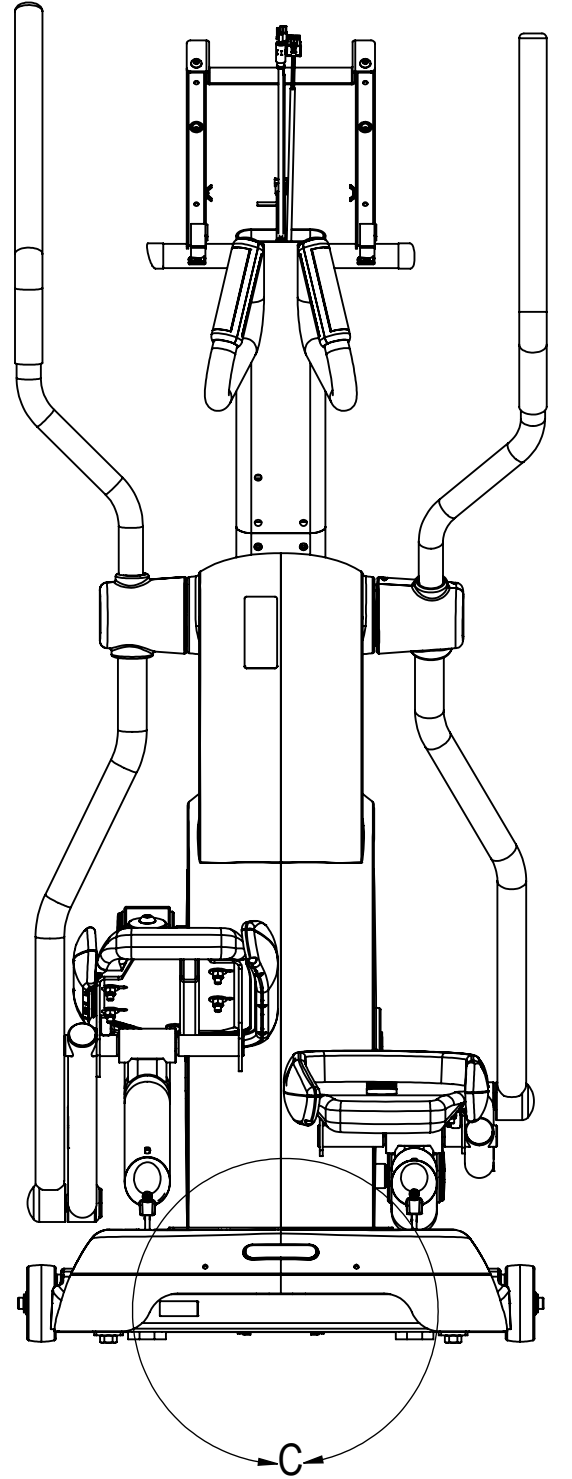
J
I
H
G
F
E
D
C
B
A



DETAIL B
SCALE 1:4



DETAIL C
SCALE 1:5



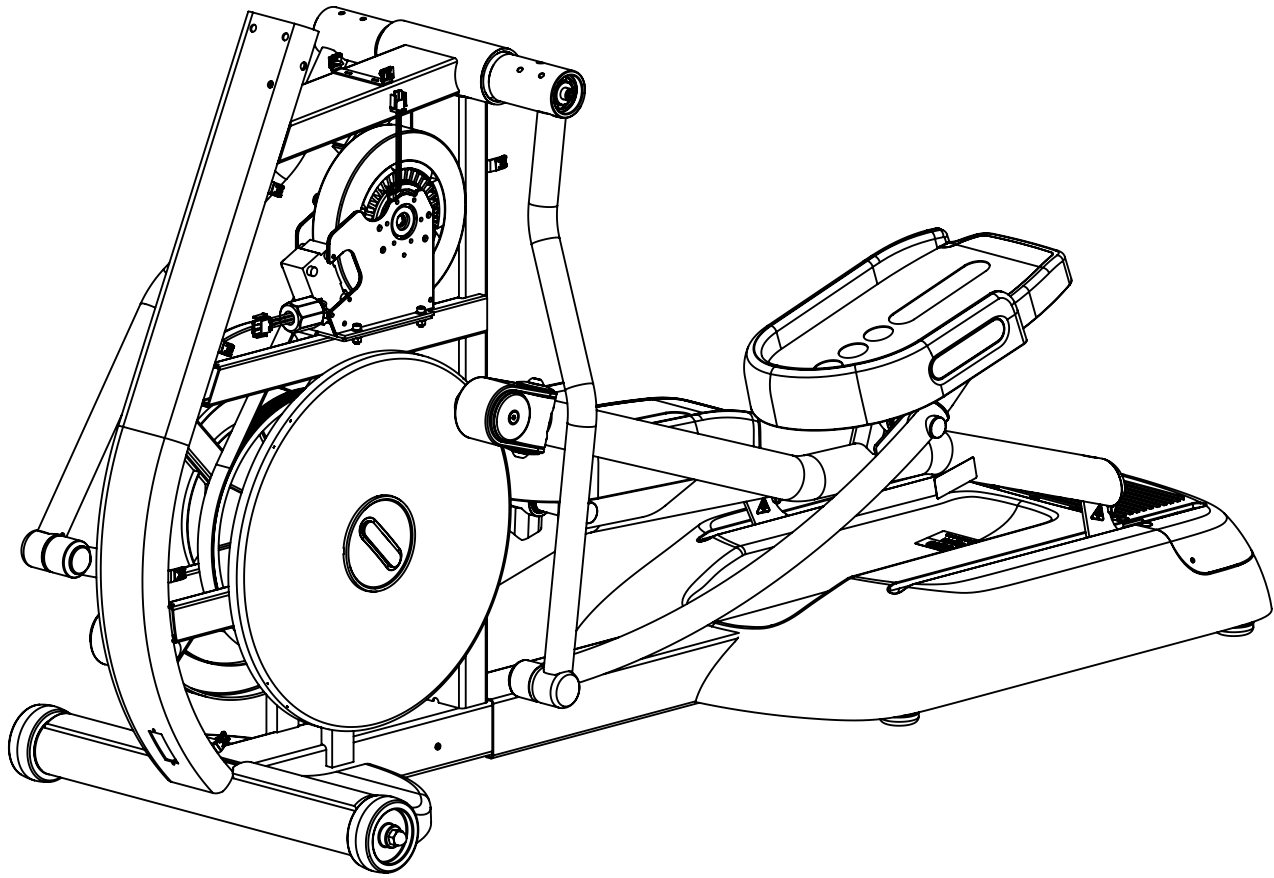
CORE INDUSTRIES, INC. DBA		14410 Myford Road Irvine CA 92606	
STARTRAC			
STARTRAC PART NO	REV		
9-6080-MUNBP0	A		
TITLE			
E-TBT6080, UNIV BASE			
SCALE: 1:8	SHEET 3 OF 3	SHEET SIZE: B	

9 8 7 6 5 4 3 2 1

NOTES:

1. COLOR DESIGNATION PER -XX SPECIFIED IN SOP 620-8222

REVISION HISTORY				
REV	DATE	DESCRIPTION	ECO	BY
A	09-12-13	PRODUCTION RELEASE	14377	VC
B	1/22/2014	CHANGE PLASTIC KNUCKLE CAP 740-7840 WITH METAL CAP ASSEMBLY 740-7840	14519	CRB



ITEM NO.	PART NUMBER	DESCRIPTION	QTY.
1	110-3177	SCREW, ISO4762, M5x16	3
2	110-3524	NUT, ACORN, 1/2"-13	2
3	130-1694	WHEEL, 4.0" OD X 0.5" BORE	2
4	140-3248	SPACER, BRACKET, IDLER	3
5	140-3323	U-NUT, #8, PANEL .025-.125	14
6	140-3324	FOAM RUBBER, 1/4x3/4x2-1/2"	7
7	260-0939	W/ PULLEY, GEN/BRAKE, HYBRID, 6200	1
8	440-0280	FERRITE, SNAP-IT, 36.6x47.5x18.35	1
9	731-0120	SCREW, M8 X 1.25, 20MM, FHM.HK	2
10	731-0350	SCREW, M10 X 1.5, 25MM, SHC, HK	2
11	731-0363	NUT, M10X1.5, NYLOC	4
12	731-0367	WASHER, PLAIN, M10	8
13	731-0373	WASHER, PLAIN, M6	8
14	731-0570	SCREW, M8 X 1.25, 16MM, SHC, HK	6
15	731-1045	SCREW, M10X1.5, 80MM, SHC, HK, ZP	4
16	731-1222	WASHER, 25OD X 8.5ID X 3T	2
17	731-1363	NUT, M6X1.0, NYLOC	4
18	731-1476	SCREW, M10 X 1.5, 45MM, HHM, HE, CS, ZP	4
19	731-1755	NUT, M10X1.5, THIN JAM	4
20	740-4069	HEX NUT, FLANGE, FINE PITCH, M14X1.5	2
21	740-4074	ASSY, IDLER, TBT/X	1
22	740-4512	BELT, POLY V, 610J10	1
23	740-4552	PILLOW BLOCK, 25mm ID	2
24	740-7023	ASSY, FOOT, W/ OVER MOLD	4
25	740-7173	NUT, 1/2-13, HEX, CS, BO	4
26	740-7687-XX	WELDMENT, FRAME, BASE, E-CT	1

ITEM NO.	PART NUMBER	DESCRIPTION	QTY.
27	740-7719-XX	ASSY, STEP, REAR, E-CT	1
28	740-7723	ASSY, FLYWHEEL, E-CT	1
29	740-7729-XX	ASSY, ARM, CRANK, E-CT	2
30	740-7751-XX	ASSY, ARM, PIVOT, E-CT	2
31	740-7778	ASSY, WELDMENT, ROD, GUIDE	2
32	740-7787-XX	ASSY, LEG/PEDAL. RIGHT, E-CT	1
33	740-7788-XX	ASSY, LEG/PEDAL. LEFT, E-CT	1
34	740-7801-XX	ASSY, BEAM, LEG, E-CT	2
35	740-7807	WASHER, PLAIN, M12	4
36	740-7808	SCREW, M12 X 1.5 , 35MM, BHC, HK, SS	4
37	740-7840	ASSY, COVER, BEARING, 9ID X 33OD, E-CT	2
38	740-7841	SHAFT, PEDAL, 6ID x 17OD x 202.3MM, E-CT	2
39	740-7842	WASHER, 8.4mmID X 21mm OD X 1.6mm THK	5
40	740-7843-XX	COVER, FOOT PROTECT, LEFT	1
41	740-7844-XX	COVER, FOOT PROTECT, RIGHT	1
42	740-7845-XX	SHROUD, COVER, CENTER, E-CT	1
43	740-7846	WASHER, 10.5mm ID X 30mm OD X 2.5mm THK	2
46	740-7849	CAP, PLUG, 28MM OD, E-CT	4
45	740-7850	CAP, PLUG, 38mm OD, E-CT	2
46	740-7897	SCREW, SELF TAPPING, M4.2 X 19, PH, SS	33
47	740-7898	SCREW, M6 X 1.0, 20MM, SHC, HK	4
48	740-7906	ASSY, CAP, HUB, E-CT	2
49	740-8491	SCREW, M8 X 1.0, 90MM, HHC	1
50	740-8492	COMPRESSION SPRING, 17.5OD X 50MM	1

DOCUMENT STATUS:

-

NOTICE OF PROPRIETARY INFORMATION
THIS DOCUMENT SHALL NOT BE REPRODUCED NOR SHALL THE INFORMATION CONTAINED HEREIN BE USED BY OR DISCLOSED TO OTHER EXCEPT AS EXPRESSLY AUTHORIZED BY CORE HEALTH & FITNESS, LLC.

MATERIAL
SEE BOM

FINISH
N/A

VENDOR:

THIRD ANGLE PROJECTION



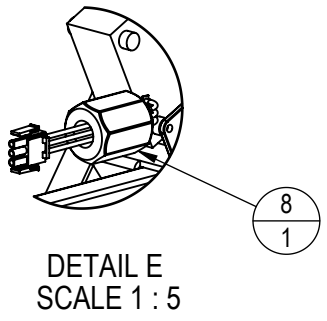
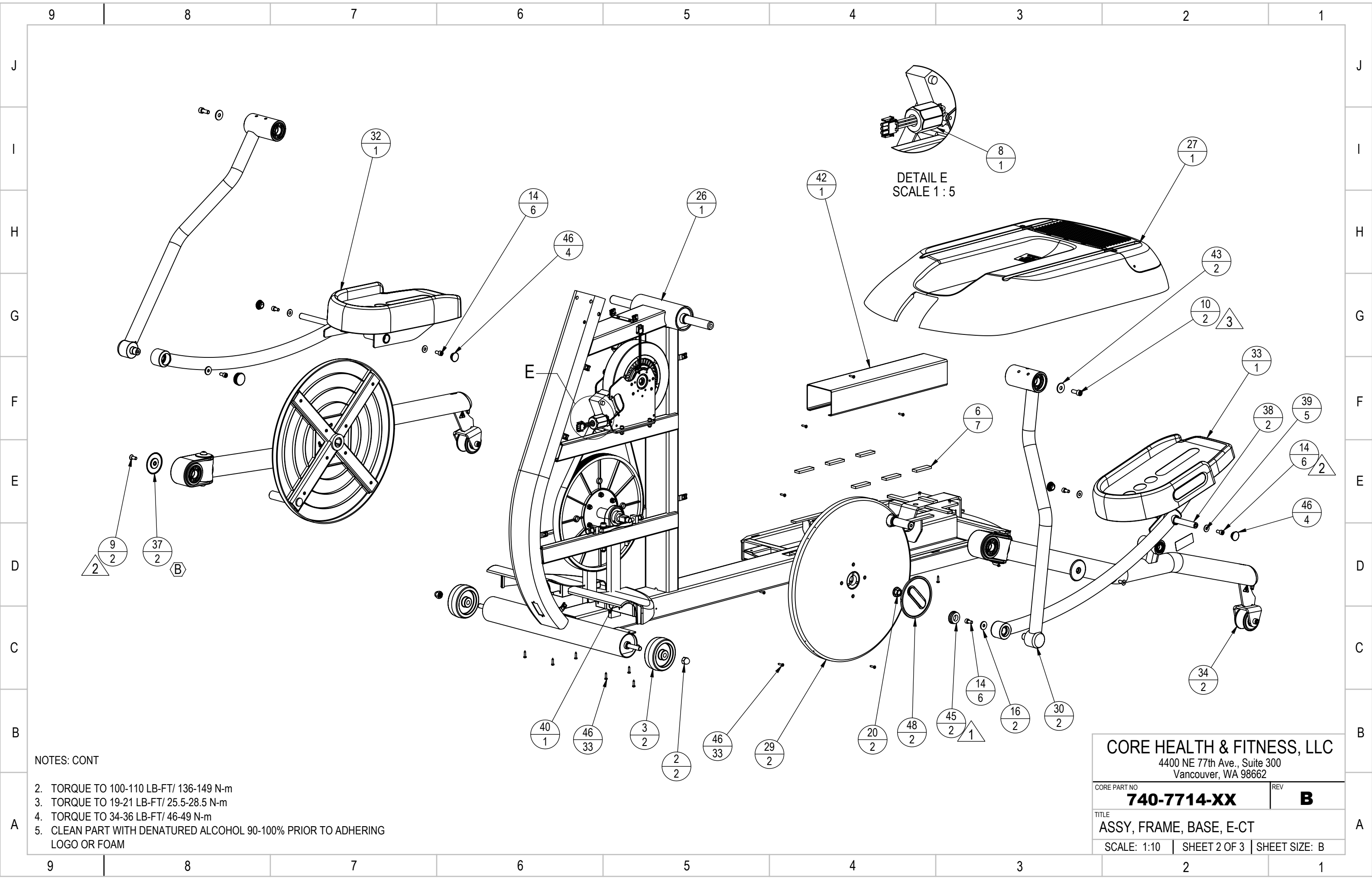
DRAWN	INITIAL SCN	DATE 7/19/10
CHECKED		
APPROVED		

CORE HEALTH & FITNESS, LLC
4400 NE 77th Ave., Suite 300
Vancouver, WA 98662

CORE PART NO: **740-7714-XX** REV: **B**

TITLE: **ASSY, FRAME, BASE, E-CT**

SCALE: 1:10 | SHEET 1 OF 3 | SHEET SIZE: B



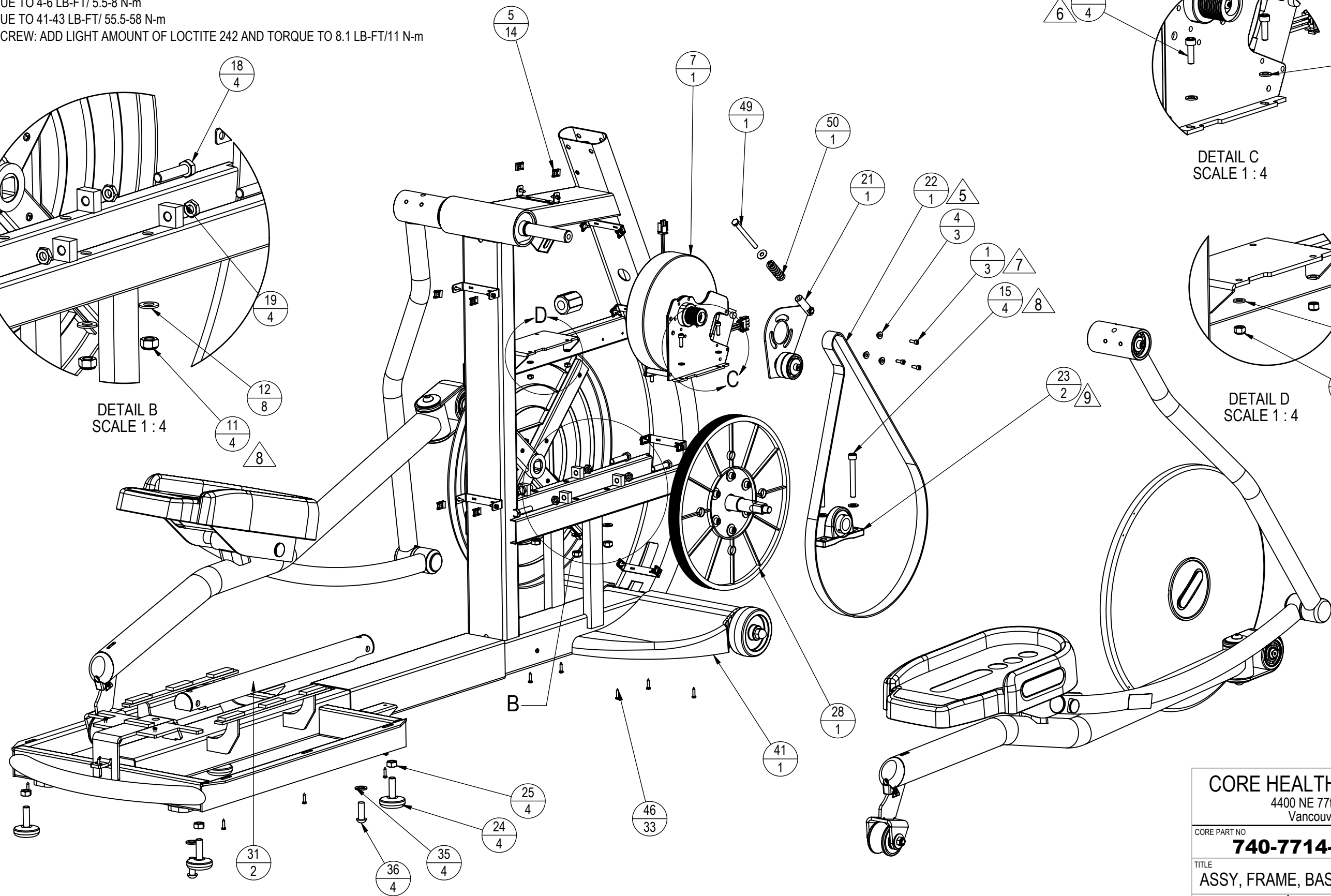
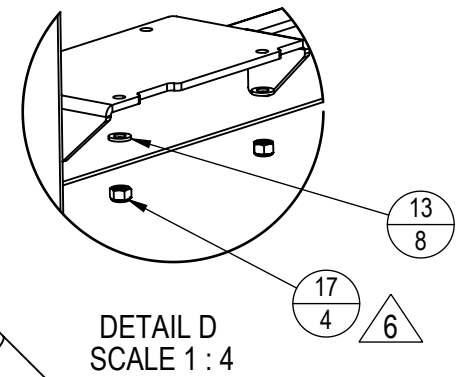
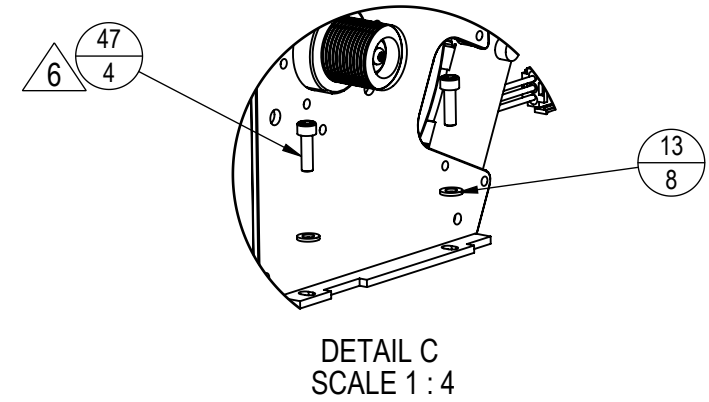
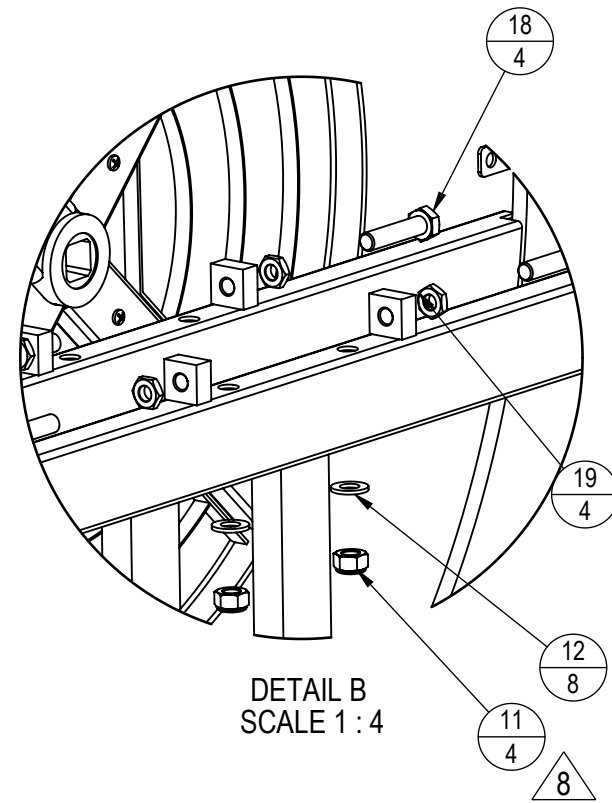
- NOTES: CONT
- 2. TORQUE TO 100-110 LB-FT/ 136-149 N-m
 - 3. TORQUE TO 19-21 LB-FT/ 25.5-28.5 N-m
 - 4. TORQUE TO 34-36 LB-FT/ 46-49 N-m
 - 5. CLEAN PART WITH DENATURED ALCOHOL 90-100% PRIOR TO ADHERING LOGO OR FOAM

CORE HEALTH & FITNESS, LLC 4400 NE 77th Ave., Suite 300 Vancouver, WA 98662	
CORE PART NO 740-7714-XX	REV B
TITLE ASSY, FRAME, BASE, E-CT	
SCALE: 1:10	SHEET 2 OF 3 SHEET SIZE: B

9 8 7 6 5 4 3 2 1

NOTES: cont.

- 6. BELT TENSION IS 60-70 LBS/ 267-311 N. BELT TENSION SHOULD BE TAKEN FROM THE LONGEST SPAN. BELT TENSION SHOULD NOT BE TAKEN FROM THE IDLER SIDE.
- 7. TORQUE TO 8-10 LB-FT/ 10-13 N-m
- 8. TORQUE TO 4-6 LB-FT/ 5.5-8 N-m
- 9. TORQUE TO 41-43 LB-FT/ 55.5-58 N-m
- 10. SET SCREW: ADD LIGHT AMOUNT OF LOCTITE 242 AND TORQUE TO 8.1 LB-FT/11 N-m



CORE HEALTH & FITNESS, LLC	
4400 NE 77th Ave., Suite 300 Vancouver, WA 98662	
CORE PART NO	REV
740-7714-XX	B
TITLE	
ASSY, FRAME, BASE, E-CT	
SCALE: 1:8	SHEET 3 OF 3 SHEET SIZE: B

9 8 7 6 5 4 3 2 1

J
I
H
G
F
E
D
C
B
A

J
I
H
G
F
E
D
C
B
A